

# HOOD

MODELS 7000, 8000 & 182  
TREE LENGTH  
SELF-LOADERS



- **LOAD TREE LENGTH LOGS WITHOUT DETACHING TRAILER**
- **CAPACITIES TO 18,000 LBS.**
- **BOOMS LENGTHS TO 27'**



# HOOD

## TREE LENGTH SELF-LOADERS

The HOOD Self-Loaders Series are built to eliminate the need to detach trailers while maintaining a high production schedule.

Simply position the trailer perpendicular to the tractor and you're in business.

The unique design of the HOOD Tree Length Series Self Loaders will permit quick and easy storage behind the tractor cab for highway travel.

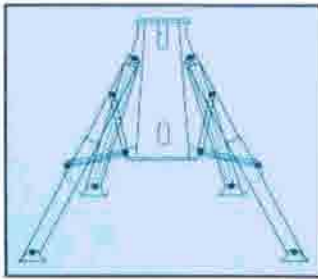


# HOOD

## DESIGN FEATURES



A-frame stabilizers are standard with the optional fold out design available.



The operator platform is equipped with joy-stick controls for easy operation.

The unique knuckle design permits close in and down operation and allows for over-cab stowing.

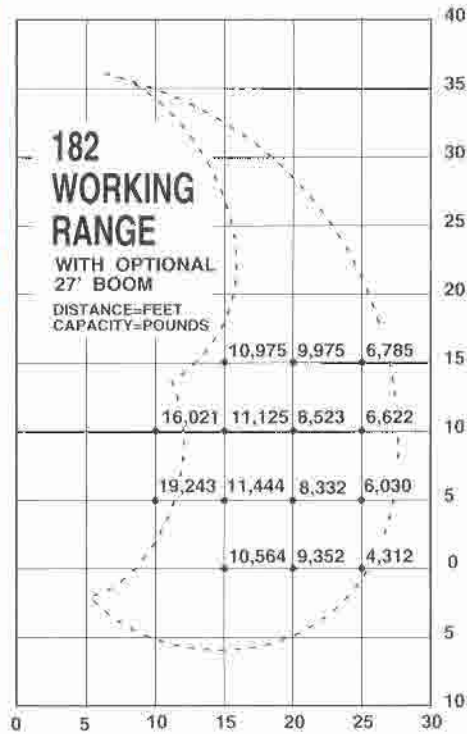


A special rest is designed to hold the grapple in the loader in the travel position.

Factory equipped dead heel is attached to main boom.

# HOOD

## MODELS 7000, 8000 & 182 TREE LENGTH SELF-LOADERS SPECIFICATIONS



### MODEL 7000

Lift Capacity - 10,970 lbs. (*capacity based on mathematical calculations*)

22' Fabricated T-1 steel boom with 25' option available

1 - 6" x 36" lift cylinder

1 - 5" x 30" jib cylinder

(2) Planetary drive swing gearbox with fail-safe brake

Non-continuous rotation with 28" turntable bearing

Stabilizers with 3-1/2" x 40" cylinders 12" x 12" stabilizer pads

Bi-rotational gear type pump allows more than one function to be operated simultaneously. Tandem 2" gears provide 28 and 28 GPM.

38 gal. hydraulic reservoir

Intank return filters absolute 10 micron

Stack type control valves

Operating pressure 2,000 PSI

Joy stick controls (mechanical)

### MODEL 8000

Lift Capacity - 11,900 lbs. (*capacity based on mathematical calculations*)

22' Boom with 27' option available

1 - 6" x 42" lift cylinder

1 - 6" x 30" jib cylinder

(2) Planetary drive swing gearbox with fail-safe brake

Non-continuous rotation with 30" turntable bearing

Stabilizers with 3-1/2" x 40" cylinders 12" x 12" stabilizer pads

Bi-rotational gear type pump allows more than one function to be operated simultaneously. Tandem 2" gears provide 28 and 28 GPM.

38 gal. hydraulic reservoir

Intank return filters absolute 10 micron

Stack type control valves

Operating pressure 2,000 PSI

Joy stick controls (mechanical)

### MODEL 182

Lift Capacity - 19,243 lbs. (*capacity based on mathematical calculations*)

27' Fabricated T-1 steel boom with 30' option available

1 - 7" x 42" lift cylinder

1 - 7" x 30" jib cylinder

(2) Planetary drive swing gearbox with fail-safe brake

Continuous rotation with 39" turntable bearing

(2) Stabilizers with 6" x 24" cylinders 24" x 24" stabilizer pads

3-Section gear pump

38 gal. hydraulic reservoir

Intank return filters absolute 10 micron

Stack type control valves

Operating pressure 2,200 PSI

Joy stick controls (mechanical)

# HOOD

## Listening... and Building the Best!

Designing and Manufacturing High Quality Forestry Equipment  
for the Cost-Conscious Log and Pulpwood Producer

**HOOD EQUIPMENT, INC.**

P.O. Box 307  
Iron River, WI 54847  
(715) 372-4222

DISTRIBUTED BY: